

Z-VENT

Available in sizes 3" to 24" single and double wall

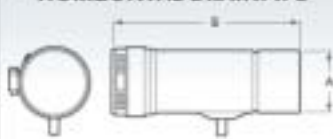
SPECIAL GAS VENT FOR CATEGORY II, III, IV HEATING EQUIPMENT 

45 DEGREE ELBOW



Catalogue #	Size	A	B	C
25VEEWCF0345	3"	3"	8.25"	5.5"
25VEEWCF0445	4"	4"	7"	5.7"

HORIZONTAL DRAINPIPE



Catalogue #	Size	A	B
25VEDWCF	3"	3"	8.5"
25VEDWCF	4"	4"	10.5"



90 DEGREE ELBOW



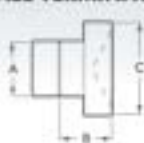
Catalogue #	Size	A	B
25VEEWCF0390	3"	3"	8.25"
25VEEWCF0490	4"	4"	7.2"

GAS VENT PIPE[†]



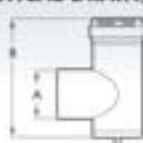
Catalogue #	Size	A
25VEPWCF03	3"	3"
25VEPWCF04	4"	4"

WALL TERMINATION



Catalogue #	Size	A	B	C
25VSRTR03	3"	3"	4"	5"
25VSRTR04	4"	4"	4"	6"

VERTICAL DRAIN/TEE



Catalogue #	Size	A	B
25VEVWCF03	3"	3"	7.5"
25VEVWCF04	4"	4"	7.5"

Connects in a Snap!

- Simple gasketed connection – no sealant needed*
- Features the highest pressure rating in the industry
- The only metallic special gas vent you can **cut to length on site**
- New fusion welded pipe seams for a smoother finish and better fit
- 1" clearance to combustibles – can be installed where clearances are minimal

[†] Pipe Length Available - 6', 1' to 5', 8', 10'

* Patent Pending



Z-Vent IS DESIGNED FOR USE WITH BOILERS, HIGH EFFICIENCY FURNACES, POOL HEATERS, UNIT HEATERS & WATER HEATERS.

CLIP TO LENGTH IN THE FIELD



Z-Vent is manufactured using AL29-4C® advanced ferritic stainless steel** with unmatched corrosion resistance for use with condensing furnaces and boilers. Z-Vent was developed in the early 1980's and has thousands of field installations to date. Z-Vent is now manufactured utilizing a fail-safe gasket connection. No sealant is required.

See website for list of equipment - www.z-flex.com

The lengths of pipe may be cut on non-expanded end using aviation snips or a hacksaw (24 tpi). The cut end must be filed or sanded smooth before joining.

Features:

- Gasketed connections
- The highest pressure rating in the industry
- Fusion welded pipe seams
- The only metallic special gas vent that can be cut to length on site
- 1" clearance to combustibles

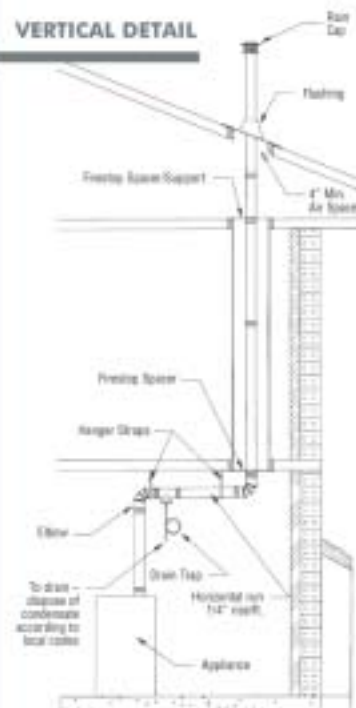
Benefits:

- No sealant required – Immediate start up, no call backs
- More than 3 times the industry standard
- Provides an air-tight seam, smooth finish and a better fit
- Being able to cut the product in the field will save you time and money. Pipe available from 6" thru 10"
- Can be installed with minimum clearance to combustibles

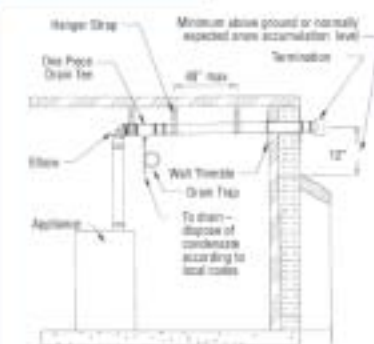
Appliance connectors available for most equipment. Please refer to price guide.

TYPICAL INSTALLATIONS:*

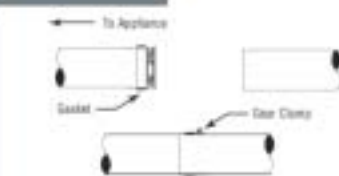
VERTICAL DETAIL



SIDE WALL DETAIL



JOINT DETAIL



* All drawings are for illustrative purposes only. Please refer to guide for specific U.L. installation instructions. Always refer to local building codes.
** AL29-4C is a registered trademark of Alloy Steel Corporation.

U.S.A.

20 Commerce Park North, Bedford, NH 03110-6911
Tel: 603.669.5136 1.800.654.5600 Fax 1.888.889.3539

CANADA

452 Attwell Drive, Etobicoke, ON M9W 5C3
Tel: 416.679.0045 Fax: 416.679.0051

Z-FLEX
CHIMNEY & VENTING SOLUTIONS



Email: sales@z-flex.com
Website: www.z-flex.com